

BMW OPERATING SYSTEM 9

65 30 23 [SI] October 2023 (v01)

MODEL

E-Series	Production Date	Affected Option Code
ALL	From August 2023	With HU-H6 Head Unit

SITUATION

With the introduction of the Headunit 6 (HU-H6), certain BMW vehicles will now utilize the new BMW Operating System 9.

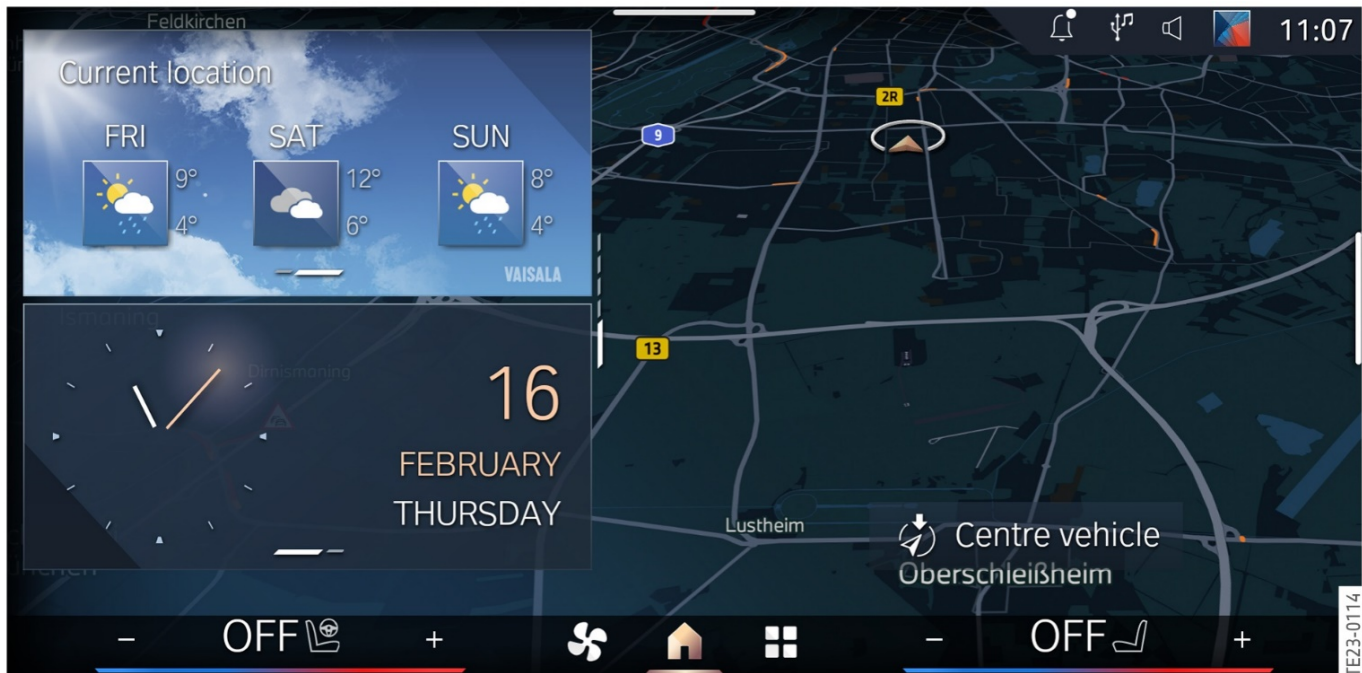
INFORMATION

With the launch of the BMW Operating System 8 and Operating System 8.5 (OS8.5) with QuickSelect, a new level of functionality was presented to our customers. While these systems were new and exciting, BMW is always innovating. With that comes the introduction of another concurrent version of our operating system: **BMW Operating System 9**

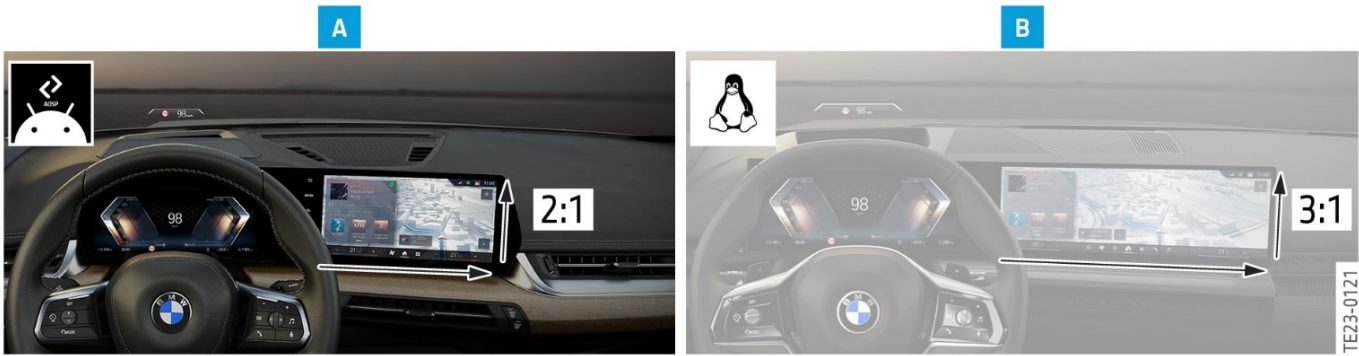
BMW Operating System 9 is NOT an upgrade to BMW Operating System 8.5 with QuickSelect. In fact, most of the functionality of BMW Operating System 9 is nearly identical to BMW Operating System 8.5 with QuickSelect. In this bulletin we will highlight differences between the two systems and small changes in functionality.

For more information on the standard operation of OS8.5 with its redesigned home screen and the QuickSelect menu, please reference **SI B65 18 23**.

BMW Operating System 9 is only available in vehicles with the HU-H6. This new headunit uses Android Open Source for its base programming, which is a departure from previous headunits that used Linux.



Initially, BMW Operating System 9 will only be available in the smaller 2:1 ratio Multifunction Display. The larger 3:1 ratio Multifunction Display will be for HU-H5 with the Linux base programming.



The main changes with Operating System 9 can be found listed below:

- BMW Digital Premium
- BMW Navigation
- BMW Connected Drive Store

BMW Digital Premium

BMW Digital Premium is a subscription service that is available in the Connected Drive Store for BMW Operating System 9. This service activates premium options with added features for certain systems in BMW Operating System 9 such as but not limited to:

1. BMW Navigation
2. BMW Intelligent Personal Assistant
3. BMW MyModes
4. BMW Connected Drive Store

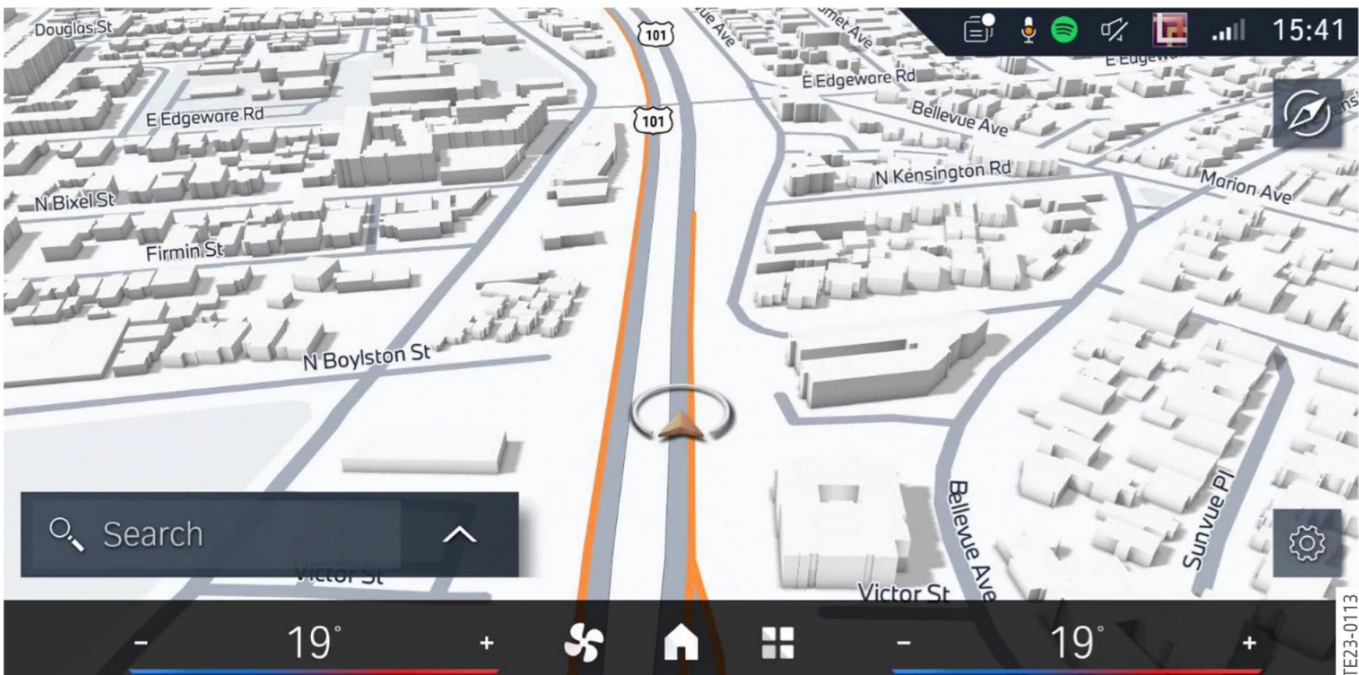
When BMW Digital Premium is active in a vehicle, all the previously mentioned systems will have expanded operating abilities or additional options available.

BMW Navigation

New to BMW Operating System 9 vehicles, navigation maps are no longer stored directly in the vehicle. Now the navigation data is downloaded for the surrounding vehicle area or for the currently activate guided route. As the vehicle moves, new map data is downloaded continuously.

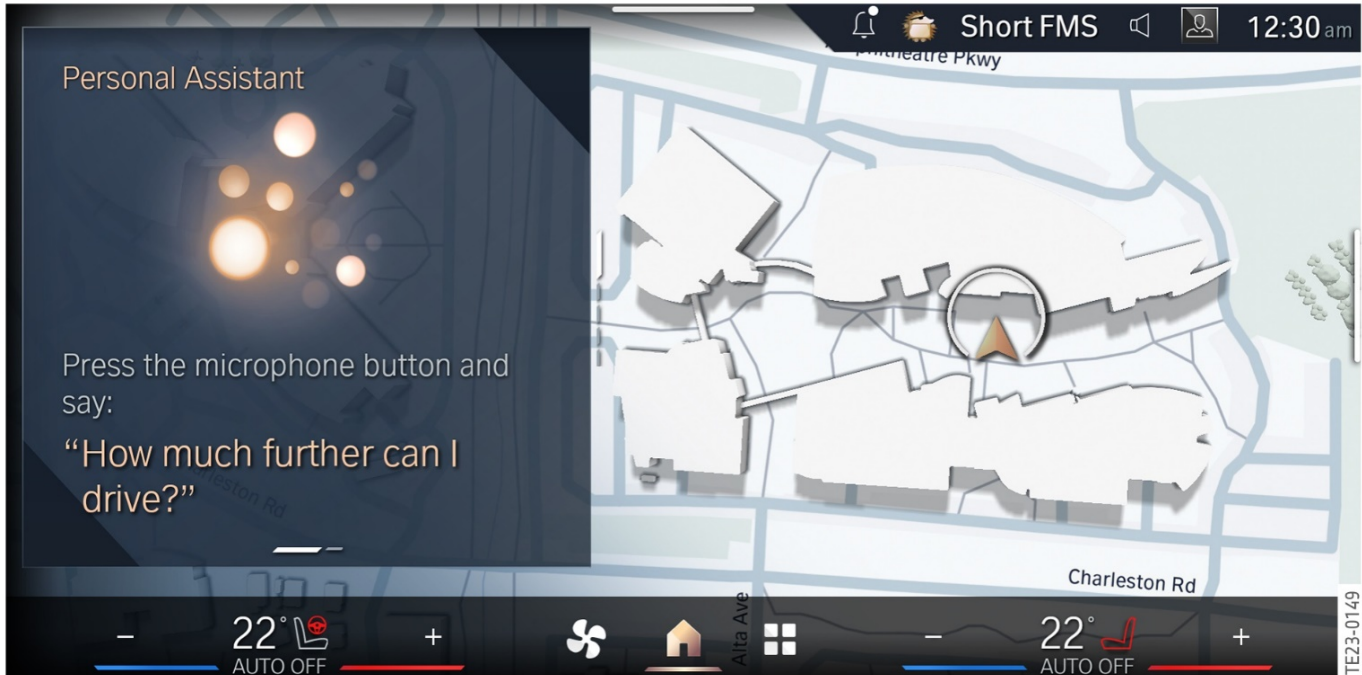
With standard navigation, route guidance functionality has not changed but Real Time Traffic information (RTTI) is available for the mapped route only.

With BMW Digital Premium, the navigation functionality includes Real-time traffic visualization in color (even without active guidance) and enriched map visualizations, (i.e., 3D buildings and satellite images, points of interest including fuel prices, parking fees) and street parking availability in select cities.



BMW Intelligent Personal Assistant

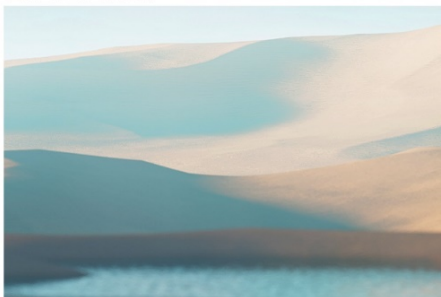
The BMW Intelligent Personal Assistant will be more functional with BMW Operating System 9 and Digital Premium. The system will provide improved voice recognition and a greater range of customization for the Intelligent Personal Assistant avatar.



BMW MyModes

With BMW Operating System 9, the selection of different MyMode options increases for the customer from the standard "Sport", "Efficient", and "Personal" choices. In addition to these standard options, "Relax", "Expressive", and "Digital Art" will be available with more to come. The added MyMode options are only available with Digital Premium.

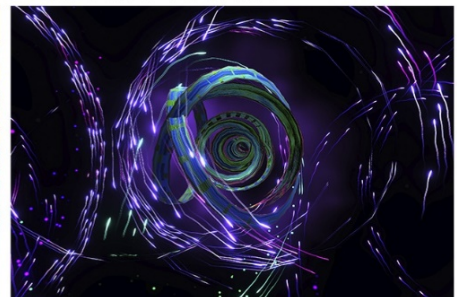
RELAX.



EXPRESSIVE.



DIGITAL ART.

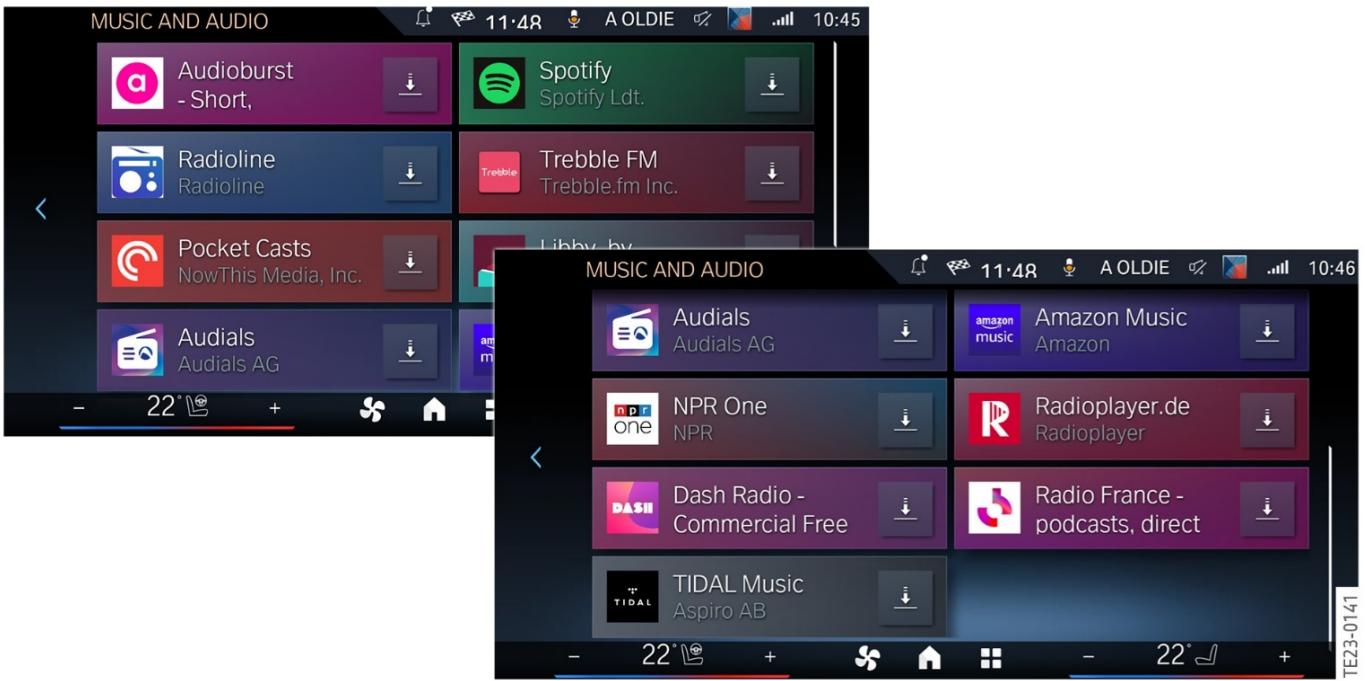


BMW ConnectedDrive Store

With Digital Premium, the ConnectedDrive Store will now give the customer access to not only BMW apps but also 3rd party apps for various Music, News, Sports and Games (i.e., Spotify, iHeartRadio, Yahoo Music).

NOTE: For some of these 3rd party apps, an additional ID and log-in for that service may be needed.

Any app data that is stored while BMW Digital Premium is active will not be lost if the service is cancelled, but all downloaded apps and games will not be accessible until the Digital Premium Service is reactivated.



Further Information

The BMW Operating System 9 will only be available in vehicles with the HU-H6 head unit. If unsure about which head unit is installed in a specific vehicle, please reference the ETK parts system or the BMW ConnectedDrive Dealer Cockpit in S-Gate.

Home	Vehicle analysis		
Model:	X7 xDrive40i		
Development series	G07		
Body:	Sports Activity Vehicle		
Production date:	07/18/2022		
Country assignment of vehicle:	USA		
Vehicle description:	-		
Color:	BLACK SAPPHIRE METALLIC		
Optional equipment:	06AC.06AE.06AK		
Communication unit and head unit:	WAVEhigh_MGU21high		
Last update to the head unit on:	06/08/2023 5:13:48 PM		
Last update to the communication unit on:	06/08/2023 5:13:34 PM		
Reason for the last service update:	Unknown		
Status of the last service update:	Confirmed by vehicle		
I level ex works:	S18A-22-07-527	Service pack:	SP_2021
Current I level:	S18A-23-03-545	HMI version:	id8



NOTE: The ConnectedDrive Dealer Cockpit references the head units and telematics units by the internal engineering designations. This will be changed in the future. For this issue:

- IDChigh = HU-H6

Customers that have BMW Operating System 8 or BMW Operating System 8.5 **WILL NOT** be able to move to BMW Operating System 9. Also, due to the multiple hardware, software and wiring harness changes, a retrofit option to the HU-H6 head unit **WILL NOT** be possible.

For further information, please refer to other BMW Operating System 9 references in Technipedia.