

Installation- and operation instructions exhaust flap control

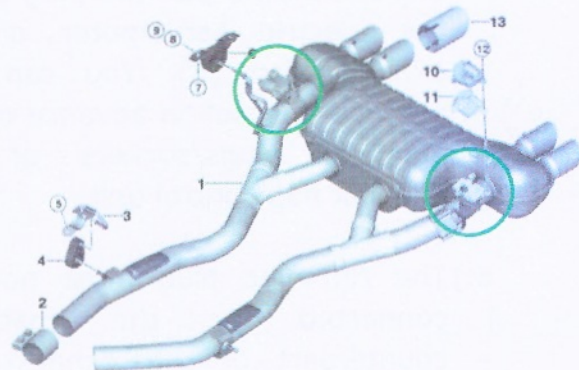
For following models:

- BMW 125i 3-door/5-door (type F20/F21) YOM 2011 – 2016 (160 kW)
- BMW 125i 3-door/5-door (type F20/F21) YOM 2016 – 2019 (165 kW)
- BMW 125i Limousine (type F52) YOM 2017 – 2021 (170 kW)
- BMW M135i(x) 3-door/5-door (type F20/F21) YOM 2012 – 2015 (235 kW)
- BMW M135i(x) 3-door/5-door (type F20/F21) YOM 2015 – 2016 (240 kW)
- BMW M140i(x) 3-door/5-door (type F20/F21) YOM 2016 – 2019 (250 kW)
- BMW 128ti (type F40) from YOM 2020 (195 kW)
- BMW M135ix (type F40) from YOM 2019 (225 kW)
- BMW 225i Active Tourer (type F45) YOM 2014 – 2018 (170 kW)
- BMW 225ix Active Tourer (type F45) YOM 2014 – 2021 (170 kW)
- BMW 228i Coupé/Cabrio (type F22/F23) YOM 2014 – 2016 (180 kW)
- BMW 228ix Coupé/Cabrio (type F22/F23) YOM 2014 – 2016 (180 kW)
- BMW 230i(x) Coupé/Cabrio (type F22/F23) YOM 2016 – 2021 (185 kW)
- BMW M235i(x) Coupé/Cabrio (type F22/F23) YOM 2013 – 2016 (240 kW)
- BMW M240i(x) Coupé/Cabrio (type F22/F23) YOM 2016 – 2021 (250 kW)
- BMW M2 Coupé (type F87) YOM 2015 – 2018 (272 kW)
- BMW M235ix Gran Coupé (type F44) YOM 2019 – 2021 (225 kW)
- BMW 230i Coupé (type G42) from YOM 2022 (180 kW)
- BMW M240ix Coupé (type G42) from YOM 2021 (275 kW)
- BMW 328i(x) Limousine, Touring (type F30/F31) YOM 2012 – 2015 (180 kW)
- BMW 328i(x) Gran Turismo, long (type F34/F35) YOM 2012 – 2015 (180 kW)
- BMW 330i(x) Limousine, Touring (type F30/F31) YOM 2015 – 2018 (185 kW)
- BMW 330i(x) Gran Turismo, long (type F34/F35) YOM 2015 – 2018 (185 kW)
- BMW 335i(x) Limousine, Touring (type F30/F31) YOM 2012 – 2015 (225 kW)
- BMW 335i(x) Gran Turismo, long (type F34/F35) YOM 2012 – 2015 (225 kW)
- BMW 340i(x) Limousine, Touring (type F30/F31) YOM 2015 – 2018 (240 kW)
- BMW 340i(x) Gran Turismo (type F34) YOM 2016 – 2021 (240 kW)
- BMW 330i(x) Limousine, Touring, long (type G20/G21/G28) YOM 2019 – 2021 (190 kW)
- BMW M340i(x) Limousine, Touring, long (type G20/G21/G28) YOM 2019 – 2021 (275 kW)
- BMW 428i(x) Coupé, Cabrio, Gran Coupé (type F32/F33/F36) YOM 2013 – 2016 (180 kW)
- BMW 430i(x) Coupé, Cabrio, Gran Coupé (type F32/F33/F36) YOM 2016 – 2021 (185 kW)
- BMW 435i(x) Coupé, Cabrio, Gran Coupé (type F32/F33/F36) YOM 2013 – 2016 (225 kW)
- BMW 440i(x) Coupé, Cabrio, Gran Coupé (type F32/F33/F36) YOM 2016 – 2021 (240 kW)
- BMW 430i(x) Coupé, Cabrio, Gran Coupé (type G22/G23/G26) YOM 2020 – 2021 (190 kW)
- BMW 430i(x) Coupé, Cabrio, Gran Coupé (type F32/F33/F36) from YOM 2021 (180 kW)
- BMW M440i(x) Coupé, Cabrio, Gran Coupé (type F32/F33/F36) from YOM 2021 (275 kW)
- BMW 530i(x) Limousine, Touring, long (type G30/G31/G38) from YOM 2017 (185 kW)
- BMW 540i(x) Limousine, Touring (type G30/G31) YOM 2017 – 2020 (250 kW)
- BMW 540i(x) Limousine, Touring (type G30/G31) from YOM 2020 (245 kW)
- BMW 630i(x) GT (type G32) from YOM 2017 (190 kW)
- BMW 640i(x) GT (type G32) YOM 2017 – 2020 (250 kW)
- BMW 640i(x) GT (type G32) from YOM 2020 (245 kW)
- BMW 730i Limousine (type G11/G12) YOM 2016 – 2019 (190 kW)
- BMW 730i Limousine (type G11/G12) from YOM 2016 – 2019 (183 kW)
- BMW 740i Limousine (type G11/G12) YOM 2015 – 2019 (240 kW)
- BMW 840i(x) Cabrio, Coupé, Gran Coupé (type G14/G15/G16) YOM 2019 – 2020 (250 kW)
- BMW 840i(x) Cabrio, Coupé, Gran Coupé (type G14/G15/G16) from YOM 2020 (245 kW)
- BMW X1 20ix (type F48_B46D) from YOM 2020 (131 kW)
- BMW X1 25i(x) (type F48) YOM 2015 – 2022 (170 kW)
- BMW X1 28i(x) (type F48) YOM 2015 – 2022 (170 kW)

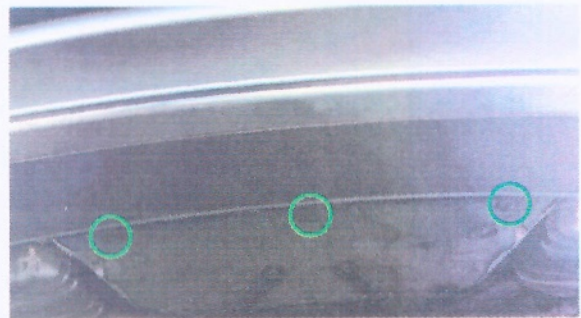
- BMW X2 20ix (type F39_B46D) YOM 2018 – 2020 (141 kW)
- BMW X2 25i(x) (type F39) YOM 2017 – 2021 (170 kW)
- BMW X2 25i(x) (type F39) YOM 2017 – 2021 (170 kW)
- BMW X2 M35ix (type F39) from YOM 2020 (225 kW)
- BMW X3 20ix (type G01_B46D) from YOM 2017 (135 kW)
- BMW X3 28ix (type G08) YOM 2018 – 2021 (165 kW)
- BMW X3 30i(x) (type G01/G08) YOM 2017 – 2021 (185 kW)
- BMW X3 30i(x) (type G01/G08) from YOM 2021 (180 kW)
- BMW X3 M40ix (type G01) YOM 2017 – 2018 (265 kW)
- BMW X3 M40ix (type G01) YOM 2018 – 2019 (260 kW)
- BMW X3 M40ix (type G01) from 2018 (265 kW)
- BMW X3M (type F97) YOM 2019 – 2021 (353 kW)
- BMW X3M Competition (type F97) from YOM 2019 (375 kW)
- BMW X4 20ix (type G02_B46D) from YOM 2017 (135 kW)
- BMW X4 30i(x) (type G02) YOM 2017 – 2021 (185 kW)
- BMW X4 30i(x) (type G02) from YOM 2021 (180 kW)
- BMW X4 M40ix (type G02) YOM 2017 – 2018 (265 kW)
- BMW X4 M40ix (type G02) YOM 2018 – 2019 (260 kW)
- BMW X4 M40ix (type G02) from 2018 (265 kW)
- BMW X4M (type F98) YOM 2019 – 2021 (353 kW)
- BMW X4M Competition (type F98) from YOM 2019 (375 kW)
- BMW X5 28ix (type F15) YOM 2013 – 2018 (180 kW)
- BMW X5 35i(x) (type F15) YOM 2013 – 2018 (225 kW)
- BMW X5 40ex (type F15) YOM 2015 – 2018 (180 kW)
- BMW X5 30ix (type G05) from YOM 2019 (195 kW)
- BMW X5 40i(x) (type G05) YOM 2018 – 2020 (250 kW)
- BMW X5 40i(x) (type G05) from YOM 2020 (245 kW)
- BMW X5 45ex (type G05) from YOM 2019 (210 kW)
- BMW X6 30ix (type G06) from YOM 2019 (195 kW)
- BMW X6 40i(x) (type G06) YOM 2018 – 2020 (250 kW)
- BMW X6 40i(x) (type G06) from YOM 2020 (245 kW)
- BMW X7 40ix (type G07) YOM 2019 – 2020 (250 kW)
- BMW X7 40ix (type G07) YOM 2020 – 2022 (245 kW)
- BMW X7 40ix (type G07) from YOM 2022 (280 kW)
- BMW Z4 M40i (type G29) from YOM 2019 (250 kW)
- Toyota Supra GR 3.0 (type A90) from YOM 2019 (250 kW)

Installation has to be carried out expertly by a qualified person:

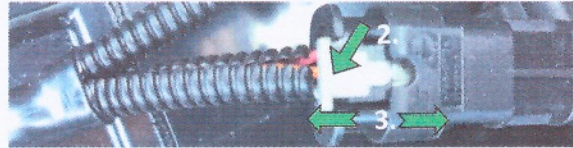
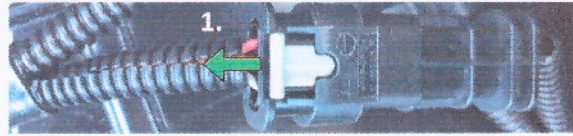
- 1.) Switch off the ignition.
- 2.) Identify the exhaust flap electric actuator on the left-hand side or on the right-hand side. It is located on the left above the rear silencer (green circle). On some models, the servomotor can also be located behind the rear silencer. The electrical plug must be unplugged. If it is dirty, please clean it without water or dry the environment as the plug and environment should be dry.



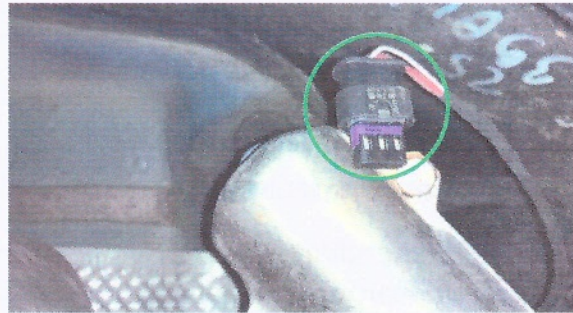
- 3.) Depending on the vehicle model, loosen any screws and fasteners on the rear bumper to get better access and a look behind the bumper.
- 4.) The control unit is basically waterproof and can be installed outside the vehicle in the underbody. However, before starting the assembly, check whether the control unit can also be installed inside the trunk. For example, under the trunk floor mat, there is space to the left next to the 12 volt battery. Then the large rubber stopper in the floor pan must be removed and the two electrical cables routed to the outside and the hole then sealed again with the cut rubber stopper. Alternatively, the rear left or right side panel could be considered.



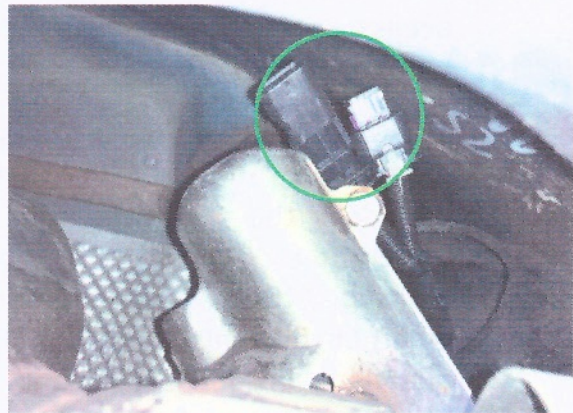
5.) Pull the release of the plug (if available) backwards a little (1). Then press the release (2) and at the same time pull the plug out of the electric servomotor of the exhaust flap (3). You can also practice this well in advance on the identical plugs/sockets of the exhaust flap control unit.



6.) The removed plug must now be connected to the matching counterpart of the exhaust flap control unit.



7.) Pull the electric cable of the exhaust flap control unit up to the exhaust flap. If necessary, you can also hide the electrical cable under the heat shield. Usually a few small screws have to be removed and reattached later.



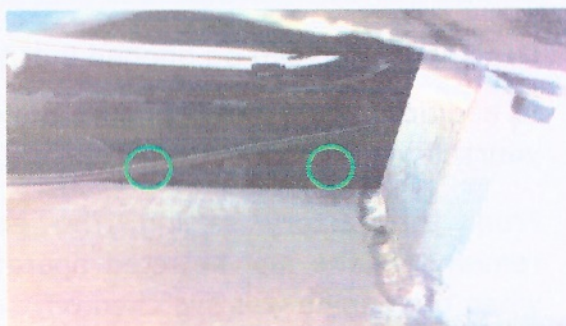
8.) Now connect the plug that was separated from the exhaust flap to the matching socket of the exhaust flap control unit until it snaps into place (1). Then slide the gray lock of the plug towards the socket so that the plug can no longer be detached (2).



- 9.) Then connect the plug of the control unit to the servomotor of the exhaust flap until it snaps into place. Push the gray lock in the direction of the servomotor so that the plug can no longer come loose.



- 10.) Fasten the cable to the electrical wiring harness in the bumper, e.g. with cable ties. Make sure that the connection line on the servomotor of the exhaust flap has enough room to move and is not under tension.



- 11.) Store the control unit in a suitable place where it is not unnecessarily exposed to excessive heat or constant water exposure. Secure the control unit firmly at suitable points on the vehicle, e.g. with cable ties. (See also point 4)
- 12.) Switch on the ignition and carry out a functional test of the exhaust flap control. If this works as described, reassemble all parts of the bumper in reverse order.

Remote control

The following functions can be controlled by briefly pressing a button:
(The engine must be running for this.)

A: Exhaust flap **permanently OPEN**

B: Exhaust flap **permanently CLOSED** (**Attention!** Avoid full load / very high engine speed!)

C: Exhaust flap opened and closed by the engine control unit (**Serial**)

D: Exhaust flap can be opened individually to a half open position (**Freestyle**)

In addition, you can reconfigure the exhaust flap control unit by yourself via the remote control:

From the factory setting, the exhaust valve control unit remembers the last selected operating mode that was active when the engine was switched off.

If you want the exhaust flap to be always in A, B, C or D mode, independent of the last setting when starting the engine, you can set this. While the engine is running, press and hold A, B, C or D for 7-8 seconds for the desired mode. When the button is released, the exhaust flap opens and closes again twice for audible acknowledgment.

If you want to return to the mode where the exhaust valve control remembers the last flap position when the engine shuts off, press and hold one of the A, B, C or D buttons for 4-5 seconds. When you release the button, the exhaust flap opens and closes again. (memory mode)

The exhaust flap control is equipped with an information channel via which the exhaust flap can communicate with the engine control unit in order to notify it of a malfunction in one of the exhaust flaps, for example. The information channel is activated at the factory. If the information channel is to be deactivated, hold down the C and D buttons simultaneously for 5-6 seconds. When the buttons are released, the exhaust flap opens and closes twice.

To reactivate the information channel, hold down the C and D buttons simultaneously for 2-3 seconds. When the buttons are released, the exhaust flap opens and closes once.

With a sliding flap from the remote control, two or all four buttons can be hidden.



Changing the battery for the remote control

Loosen the 3 screws on the back of the remote control with a small Phillips screwdriver (PH0) and put the screws aside. Place the remote control with the button side down and remove the back of the case. Remove the used battery from its holder and replace it with a new one of the same typee (12V battery typee A27 or 27A). Pay attention to the correct polarity (+/-). Reassemble the housing parts and screw them together.

Notes on battery disposal

The remote control includes a 12V typee A27 or 27A battery. Therefore, we are under the Battery Act (BattG) obliged to point out the following:

You as the end user are legally obliged to return used batteries and rechargeable batteries. Used batteries may contain harmful substances which, if not properly stored or disposed of, could damage the environment or your health. In addition, batteries contain important raw materials (such as iron, zinc, manganese, nickel) that can be recovered if properly disposed of.

We work together to collect the batteries with the Stiftung Gemeinsames Rücknahmesystem Batterien, which has set up a large number of appropriately labeled collection boxes nationwide to enable environmentally friendly disposal and recycling of the batteries.

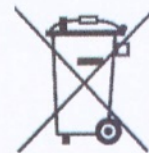


After use, you can either return the batteries to us, send them to us or return them free of charge in the immediate vicinity (for example, in stores or in the municipal collection points and the collection boxes described). If possible, the batteries should only be handed over in discharged condition or protected against short circuit by attaching an adhesive strip. The delivery in sale points is limited to the usual amount for end users and to those waste batteries that leads the distributor as new batteries in his assortment or led.

The crossed-out wheeled bin sign means you must not dispose of batteries and accumulators with your household waste. If under this sign in addition one or more of the following symbols are printed, this means:

Pb: battery contains lead (> 0.004% by mass)
Cd: battery contains cadmium (> 0.002% by mass)
Hg: battery contains mercury (> 0.0005% by mass)

Batt-Reg.Nr. DE
14240760



Notes on the disposal of WEEE

As an end consumer, you are obliged not to dispose of waste electrical and electronic equipment via household waste, but rather via a municipal collection point. The collection of these old devices and the correct recycling of raw materials protects the environment and protects the natural resources.

WEEE-Reg. number:
DE 86005496



Instructions for the disposal of packaging

Please do not throw packaging waste into the household waste, but feed it to the separate collection. For this purpose, there is usually a bin for paper/cardboard as well as a separate bin or the yellow bag for plastics. Alternatively, these materials can also be sent to a municipal collection point. Collecting these materials and recycling these raw materials properly protects the environment and conserves natural resources.

Register number packaging:
DE4123903175775



This manual is protected by copyright. Any kind of duplication, publication, storage and passing on to third parties requires the approval of the company SST-Spezialsteuergeräte.